

Intra-Oral X-Ray

Outstanding technology and user-friendliness

Key features of the range ~

- Safety-conscious technologies
- Zero-drift balance-arm
- Simple operation
- Digital and film compatible
- Adult/adolescent/child presets
- Manual override functionality
- Cone length options
- Rectangular Collimator
- Hand exposure switch
- DC X-Ray (Phot-X II)
- Easy-clean, smooth surfaces
- Mounting options
- Retrospective-fitting option



Safety-conscious and future-proof technologies, intelligent design and Belmont's renowned reliability. *Balanced scissor-arm¹ combined with ergonomic tube head designs enable easy, precise positioning for successful exposures. Zero-drift in the arm and reassuring stability at the head during exposure ensure super sharp image results.*

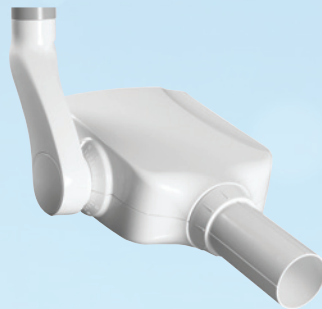
Phot-X II and 097 Belray II, with mounting options



Control panel



Phot-X II (303)
DC Dental X-Ray Unit



097 Belray II
Dental X-Ray Unit



Phot-X II WK (303WK)
wall-mounted



Phot-X II FM (303FM)
with mobile base



Phot-X II RK (303RK)
room type with stool



Phot-X II FK (303FK²)
floor-mounted



097 Belray II WK (097WK)
wall-mounted

Phot-X II CK (303CK) ceiling-mounted version also available

¹ Features on all Belmont X-Ray units except 303RK / ² 303FK Control panel can be wall- or pole-mounted

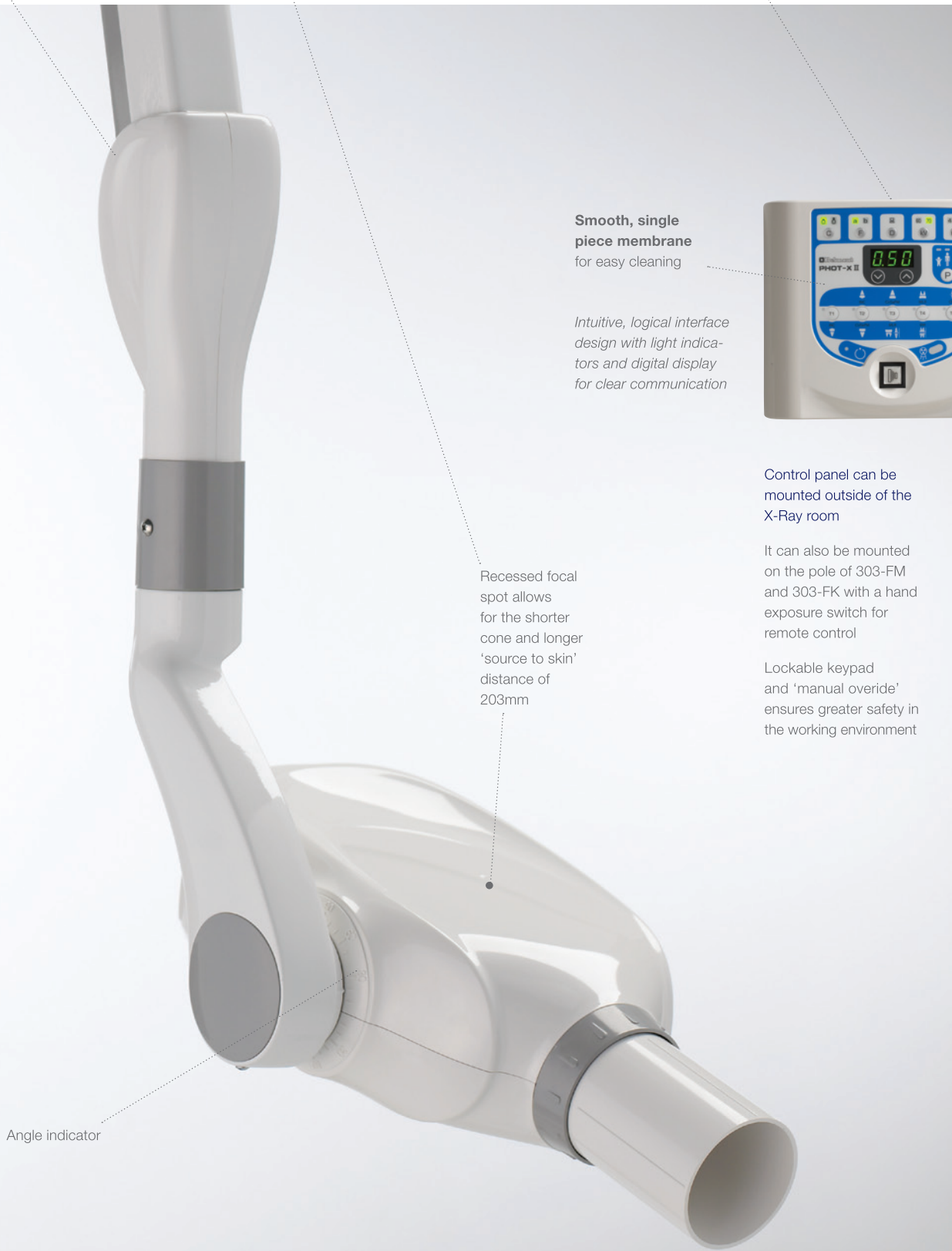
Phot-X II

Phot-X II is very user-friendly and simple to operate safely. The flexible range of mounting options ensures your preferred setup can be achieved.

Engineered for accurate positioning

Compact, lightweight (4kg) tube head for easiest handling

Compact control panel



Smooth, single piece membrane for easy cleaning

Intuitive, logical interface design with light indicators and digital display for clear communication



Control panel can be mounted outside of the X-Ray room

It can also be mounted on the pole of 303-FM and 303-FK with a hand exposure switch for remote control

Lockable keypad and 'manual override' ensures greater safety in the working environment

Recessed focal spot allows for the shorter cone and longer 'source to skin' distance of 203mm

Angle indicator

advanced, safer DC x-rays

Ideal for digital imaging with safety-conscious exposures as low as 0.01 seconds.

303-WK – wall-mounted¹

Technically advanced

Balanced scissor-arm² (various primary arm lengths are available)³

Tidy storage position

Phot-X II technical features ~

- DC X-Ray
- Tube voltage 60kV or 70v v kV
- Tube current 4mA or 7mA
- Focal spot 0.7mm
- Exposure time 0.01 to 3.2 seconds
- Rectangular Collimator

Phot-X II key features ~

- Cone length 203mm
- Optional extras include:
 - Longer Cone 305mm

Excellent stability and reach with zero drift

Head and scissor-arm fold flat to the wall

Illuminated ON/OFF switch

Intelligent and elegant head design is lightweight and easy to position precisely

Longer cone for paralleling technique is available

Wall-mounted version ~ 80cm primary arm provides a maximum reach of 192cm

DC X-Ray, compatible with all digital systems and film types, switches between digital and film at the push of a button. The Radiographer has greater control over the program and over-exposure error is easily avoided with an expansive range of exposure settings **(0.01 to 3.2 seconds)**.

¹ Other mounting options are available, see page 53 / ² Phot-X II's balanced scissor-arm features on all models except 303-RK

³ 80cm primary arm supplied as standard: 30cm or 100cm options are available

097 Belray II

Wall-mounted 097 Belray II brings advanced user-friendly features such as switching between film and digital imaging systems at the push of a button.

Engineered for accurate positioning

Compact control panel



Lockable keypad and 'manual override' ensures greater safety in the working environment

Smooth, single piece membrane for easy cleaning

Intuitive, logical interface design with light indicators and digital display for clear communication



Recessed focal spot allows for the shorter cone and longer source to skin' distance of 204mm

Control panel can be mounted outside of the X-Ray room with a hand exposure switch for remote control

It can also be mounted on the central power unit



Longer cone (305mm) option available

Angle indicator

Compact tube head for improved handling

advanced, safer x-rays

At the 097's control panel, the Radiographer can access an expansive range of exposure settings (0.02 to 3.2 seconds) and be assured of excellent image results.

097-WK – wall-mounted

Technically advanced

Balanced scissor-arm (various primary arm lengths are available)¹

Tidy storage position

097 Belray II technical features ~

- Tube voltage 70 kV
- Tube current 4mA or 7mA
- Focal spot 0.7mm
- Exposure time 0.02 to 3.2 seconds
- Rectangular Collimator

097 Belray II key features ~

- Cone length 204mm
- Optional extras include:
 - Longer Cone 305mm

Excellent stability and reach with zero drift
assists with providing the sharpest possible image

New, compact head design
is lightweight and easy to position precisely

Illuminated ON/OFF switch

Head and scissor-arm
fold flat to the wall

Wall-mounted Belray II 097 ~ 80cm primary arm provides a maximum reach of 1850mm

¹ 80cm primary arm supplied as standard: 30cm or 100cm options are available